



# Digital Video Recorder

## Main features

The EdgeDVR has been developed to be used by personnel with all levels of experience when completing visual inspections on subsea structures which require real time eventing.

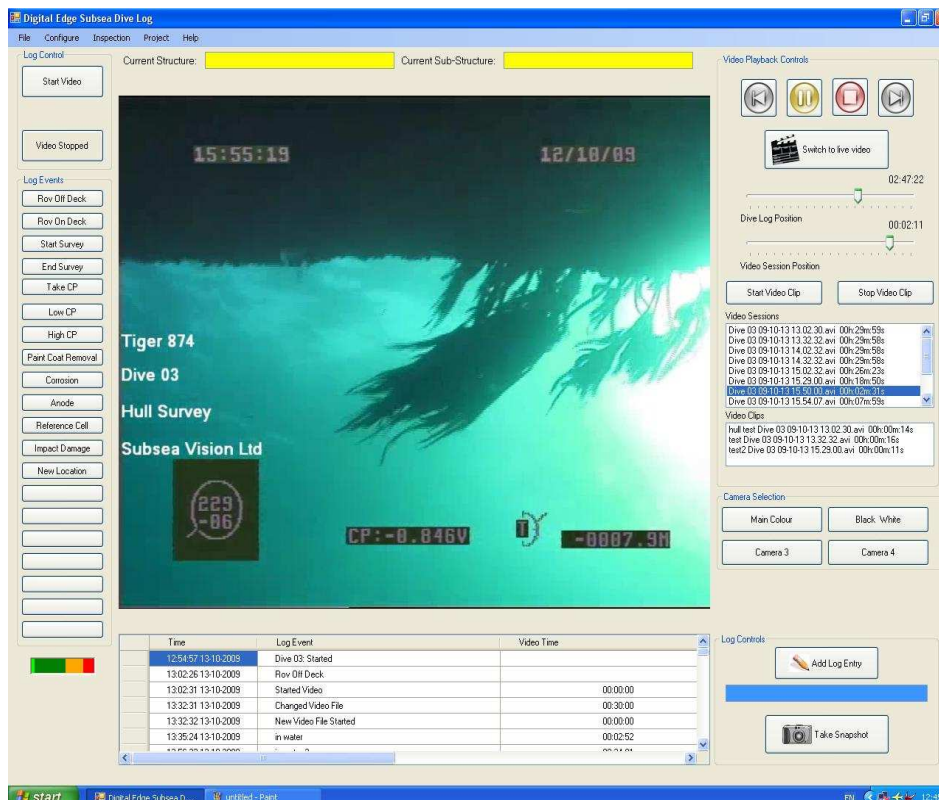
The EdgeDVR is a one stop DVR inspection unit which includes inbuilt digital overlay .

The EdgeDVR has a unique way of storing the inspection data by location, structure or substructure into predefined folders, these folders are easily created within the configuration tab in the software.

The EdgeDVR is a 4U 19in rack mounted unit with 3.5TB of storage. The unit has two removable hard drives which are for survey video, anomaly clip video, word logs and photo data. The third hard drive is used for the internal operation of the EdgeDVR.

The EdgeDVR has inbuilt automatic data backup using a proprietary data file management concept. A copy of all the data gathered from inspections is held on both 1.5TB removable hard drives.

## Screen shot of the operating software for the EdgeDVR



- ❖ Four switchable camera composite video inputs
- ❖ Analogue video converted and recorded as a digital AVI file
- ❖ Inbuilt digital overlay system
- ❖ Seamless digital video header
- ❖ Four serial inputs for displaying data via overlay i.e. GPS, Aux compass
- ❖ Real time event logging
- ❖ Video stills
- ❖ Video clip of specific anomalous areas
- ❖ Add text to the event log
- ❖ 18 configurable survey hot keys
- ❖ Automatically generates the event log, dive log, video stills log and anomaly log
- ❖ Sequential dive numbering
- ❖ Auto saves video footage and logs to predefined project and inspection folders
- ❖ Configurable for structure and substructure real time event logging
- ❖ Start/ Stop recording, top left above the preconfigurable survey hot keys
- ❖ Real time and playback video viewing screen with inbuilt digital overlay
- ❖ Audio VU meter, event log, add text entry and video still along the bottom of the screen
- ❖ Four camera input selector, video directory, video clip start / stop and video playback controls on the right side of the screen



## Specifications...

### Front Panel



### Rear Panel



### Key components

- ❖ Microsoft Windows XP Professional x64 Edition-SP3
- ❖ MS Office Word and Excel
- ❖ 500GB 7200rpm internal hard drive
- ❖ 2 x 1.5TB Removeable Hard Drives
- ❖ 20x DVD±RW Dual Layer & Ram
- ❖ 800Watt Hi-Power LED Fan PSU
- ❖ Intel Core i7 920 D0 2.66GHz Socket 1366 8MB Cache processor
- ❖ 6GB (3x2GB) DDR3 1600MHz XMS3 Memory
- ❖ Wireless mouse and keyboard
- ❖ 4 Channel Video Capture Card
  - Video Connections 4 composite
  - Connector Type BNC
  - Video NTSC or PAL
  - Image Size 32x24 to 640x480 (NTSC)
  - Image Size 32x24 to 704x576 (PAL)
  - Video Capture up to 640x480 at 30fps (NTSC) per channel
  - Video Capture up to 704x576 at 25fps (PAL) per channel

# Digital Video Recorder

### Front Panel

- ❖ Front panel of the EdgeDVR is protected by a hinged lockable lid
- ❖ Two 1.5 TB removable hard drives
- ❖ Two USB ports
- ❖ DVD writer
- ❖ Two cooling fans
- ❖ Power indicators

### Rear Panel

- ❖ Four composite 75ohm BNC connectors
- ❖ Four 9 pin serial inputs
- ❖ Two DVI monitor outputs
- ❖ Six USB ports
- ❖ LAN input
- ❖ Keyboard and mouse inputs
- ❖ Audio output
- ❖ Audio Input
- ❖ Two cooling fans